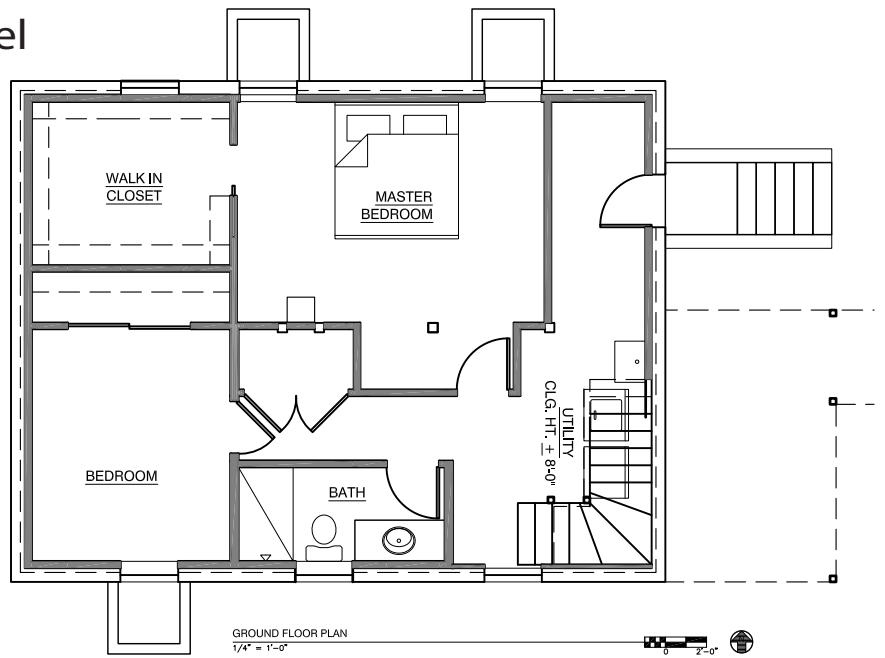


Georgetown Basement Remodel

Seattle, WA

Looking to add square footage to their 800 square foot home, the Gosma's examined a number of options for expansion. They finally settled on raising their house 20 inches, to allow for a full basement remodel. The remodel added two bedrooms, a bathroom and a laundry area to their home. The house was lifted off of its foundation and a new pony wall was infilled. The before and after view of their house remains almost exactly the same, the main difference is noticed in the front porch railings.



The house after (right).

The house before (below).

